

# GAZETTE

Spotlighting the stories of GSAPP Students, Faculty, Staff and Alumni

## IN THIS ISSUE

### NEW & FAMILIAR FACES AT GSAPP

Read about GSAPP's newest faculty, some current faculty's new positions, and please extend a warm welcome to GSAPP's new dean, Dr. Arpana Inman!

### FACULTY & STUDENT SPOTLIGHTS

From receiving grants for innovative research to awards for continued excellence, our faculty and students never cease to amaze!

### MEDIA MENTIONS

Our faculty and alumni were prominently featured in several media channels and publications. Read on!

### SAVE THE DATE

Mark your calendars for an event not to be missed, our annual Welcome Back Student Picnic!

### PROFESSIONAL DEVELOPMENT

OPDCE continues to offer a diverse array of live and on-demand webinars. Peruse the list of informative and affordable CE opportunities, and use promo code "EARLYBIRD" when registering for a 10% discount!



## ANNOUNCING DR. ARPANA INMAN AS NEW DEAN OF GSAPP

*Welcome Dean Inman! Please see below message from Chancellor-Provost, Dr. Francine Conway:*



**RUTGERS**  
UNIVERSITY | NEW BRUNSWICK

Office of the Chancellor-Provost

Dear Rutgers University–New Brunswick Community,

I am pleased to announce the appointment of Dr. Arpana G. Inman as Dean of the Graduate School of Applied and Professional Psychology, a role she will assume July 1.

Dr. Inman currently serves The Ohio State University as Associate Dean for Academic Affairs in the College of Education and Human Ecology. Previously, she served as Chair and Associate Dean for Graduate Studies at Lehigh University's College of Education. In both institutions, she helped lead campus-wide initiatives that enhanced the colleges' academic reputation.

Among her other accomplishments, Dr. Inman has focused on enhancing the educational experience for undergraduate and graduate students through the development and promotion of interdisciplinary programs and institutional partnerships; employed data-based decision-making to implement new curriculum-based procedures to improve student access and engagement; developed meaningful strategic plans by engaging multiple stakeholders to enhance student enrollment and retention, and promote faculty development; and strengthened community partnerships with an emphasis on diversity, equity, and inclusion.

Dr. Inman is a nationally recognized scholar in the areas of South Asian psychology, international issues in psychology, and multicultural supervision and training. She has more than 100 publications, has presented nationally and internationally in these areas, and hosted the American Psychological Association's DVD series on supervision models. She is a recipient of numerous awards including the Janet E. Helms Award for Mentorship and Scholarship from Teachers College, Columbia University. She has held leadership roles in several national organizations and is Past President of Division 17 (Society of Counseling Psychology) of the American Psychological Association. A native of India, Dr. Inman received her Ph.D. in Counseling Psychology from Temple University, her M.S. in Guidance and Counseling from the University of Wisconsin, and her M.A. and B.A. in Psychology from, respectively, Pune University and Ferguson College.

Dr. Inman succeeds Dr. Ryan Kettler, who has served GSAPP as Interim Dean since July 2021 and has led the community in continuing its successful track record of winning grants and competitive faculty awards; hiring faculty and staff who enhance GSAPP's diversity of thought and backgrounds including the inaugural Assistant Dean of Diversity, Equity, and Inclusion; opening the Rutgers Center for Adult Autism Services; and growing new programs. Dr. Kettler will continue his distinguished service as Associate Professor in the Department of School Psychology. I remain deeply grateful to Dr. Kettler for outstanding leadership, dedication, and hard work, which have greatly served the public good and strengthened our university.

Please join me in welcoming Dr. Inman, thanking Dr. Kettler, and expressing gratitude to the GSAPP Dean search committee, which was chaired by School of Social Work Dean Cathryn C. Potter and Trustee Emerita and member of the Rutgers University Hall of Distinguished Alumni Dorothy Cantor. I look forward to Dr. Inman's contributions toward the fulfillment of President Holloway's hallmarks of the relentless pursuit of academic excellence; the establishment of institutional clarity; and the commitment to building a beloved community.

Sincerely,

Francine Conway, Ph.D.  
Chancellor-Provost, Rutgers University–New Brunswick

**[Click here to submit your news for upcoming issues](#)**

# WELCOME AND CONGRATULATIONS

*Welcome to our new faculty, and congratulations to our current faculty on their promotions!*

---

## New Faculty Members:

**Joshua Langberg, PhD,**  
Director of the GSAPP Child  
Study Center; Professor,  
Clinical Psychology  
Department



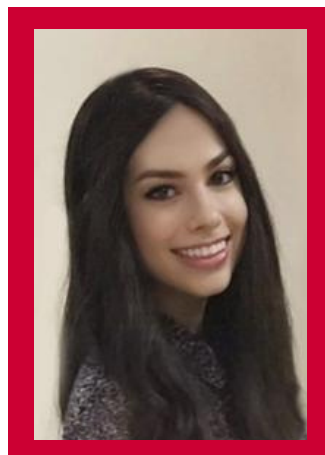
**Jennifer Foster, PhD,**  
Director of MTSS Programs;  
Assistant Teaching  
Professor, School  
Psychology Department



**Tanya Saraiya, PhD,**  
Assistant Professor,  
Clinical Psychology  
Department and Center  
of Alcohol & Substance  
Use Studies



**Sheva Cohen-Weiss, PhD,**  
Assistant Teaching Professor  
and Practicum Coordinator,  
School Psychology  
Department



---

## Familiar Faces in New Positions:

- **Ryan Kettler**, PhD, NCSP, as Assistant Dean of Academic Affairs; Associate Professor, School Psychology Department
- **Peter Economou**, PhD, ABPP, as Director of the Organizational Programs; Assistant Professor, Applied Psychology Department
- **Adam Lekwa**, PhD, as Assistant Professor, School Psychology Department
- **Christopher Manente**, PhD, BCBA, as Associate Professor of Clinical Practice, Applied Psychology Department
- **Linda Oshin**, PhD, as Assistant Professor, Clinical Psychology Department
- **Linda Reddy**, PhD, as Chair of the School Psychology Department; Associate Dean of Research
- **Daniel Rice**, MEd, as Assistant Dean of Diversity, Equity, and Inclusion

Thank you to **Anne Gregory**, PhD, for her successful term as Chair of the School Psychology Department, and **Nicole Cain**, PhD, for her successful term as Interim Assistant Dean of Academic Affairs!

**[Click here to submit your news for upcoming issues](#)**

## FACULTY SPOTLIGHT

From Dr. Linda Reddy, GSAPP Professor, Chair-School Psychology Dept., Associate Dean for Research:

Dear GSAPP Community,

Please join me in giving a well-deserved congratulations to the faculty and staff that received NEW federal, state, foundation, and corporate grants from July 1, 2021, to June 30, 2022!

For additional information on any individual project, please contact the respective PI(s) listed in the chart below.

Principal Investigator (PI)	Project Title	Sponsor (Prime/Subaward)	Category
Timothy Deary	Examining the Efficacy of the Diagnostic Assessment and Achievement of College Skills	Institute of Education Sciences (IES)	Federal
Angelo Dillerio	Dynamic Personalized Feedback for Young Adults with a History of Alcohol-Induced Blackout	National Institute of Alcohol Abuse and Alcoholism (NIAAA)	Federal
Kathryn Garcia & Kelly Moore	Children (and Families) Healing After Trauma (CHAT) Clinic	Substance Abuse and Mental Health Services Administration (SAMHSA)	Federal
Todd Glover	New Jersey Tiered System of Support for Early Reading: Expanding Capacity for Equitable, Data-driven Instruction	OSDP-School Personnel Development Grant	Federal
Linda Riddley	Efficacy of Paraprofessional Behavior Support Coaching for Elementary School Students with Externalizing Behavior Disorders	Institute of Education Sciences (IES) - Supplement	Federal
Erleen Riley	Integrated Care and ICD Internship Program (IICIP)	Health Resources & Services Administration (HRSA)	Federal
Elisa Shernoff	A Virtual Reality 3D Serious Game for Behavior Management Training: Supporting Teachers in High Poverty Schools	National Science Foundation (NSF)	Federal
Vanessa Bal	Treating Depression in Autistic Adults: A Feasibility Trial of an Adapted Behavioral Activation program	Governor's Council for Medical Research and Treatment of Autism	State
Patrick Connolly	RAVEN Program	Piscataway Township Board of Education	State
Patrick Connolly	RAVEN 2021-22 Supplement	Piscataway Township Board of Education	State
Todd Glover	New Jersey Tiered System of Support for Early Reading	Revised NIDOE	State
Todd Glover	School Climate Transformation Project (SCTP) Platform Development	Revised contract NIDOE	State
Danette Hien	Alcohol & Drug Counselor Education	State contract with Department of Health and Human Services	State
SungWoo Kahng	The Development of an Individualized Program to Teach College Students with ASD to Seek Meaningful Employment	Governor's Council for Medical Research and Treatment of Autism	State
Daniel Rice	Grove General Support	The Grove Foundation	Foundation
Daniel Rice	Wind Wind: Abuse	Wind Wind Foundation	Foundation
Daniel Rice	40th Anniversary Celebration	The Grove Foundation	Foundation
Daniel Rice	Care Skills Training for Sex Education	David and Lucile Packard Foundation	Foundation
Erleen Riley	CRPR Intervention to Decrease Lung Cancer Stigma and Health Disparities	LUNGevity Foundation	Foundation
Ellen Wilkinson	Enhanced Data-Use (EDU) Program: Interdisciplinary Preparation in Data-based Decision Making for Students with Disabilities	Autism Science Foundation (Postdoctoral Fellowship Award (Student - Vanessa Bal Mentor)	Foundation
Joanna Williams	Reducing Inequalities through Student Networks: Social Network Influences on Academic Engagement	William T. Grant Foundation	Foundation
Joanna Williams	Supporting Adolescent Capacity for Contribution	Spring Point Partners	Corporate

View Enlarged Chart

*Also, a very special congratulations to the GSAPP's 2022 Autism Research Strategic Program Grant Awardees:*

- **Meghan Deshais** (Applied Department) and **Debra Paone** (DDDC) were awarded for their project, "A Pilot Investigation of Emergent Multi-Class Imitation Training (EMIT)"
- **Vanessa Bal** (Applied Department, RCAAS) and **Brian Chu** (Clinical Department) were awarded for their project, "Optimizing Engagement and Reach of a Transdiagnostic Group Therapy for Autistic Adults through Technology and Personalized Therapeutics"
- **SungWoo Kahng** (Applied Department), with **James Maraventano** and **Courtney Butler** (RCAAS) were awarded for their project, "Development of a Participant-Centered Support Program to Teach Safety Skills to Adults with ASD"
- **David Shernoff** (School Department) and **Christopher Manente** (Applied Department and RCAAS), were awarded seed funds to develop their project, "Making for Success: Promoting Vocational Readiness for Adults with Autism Through an Inclusive Makerspace Program"

Your work is exceptionally impressive given all of the challenges associated with the COVID pandemic. What an accomplishment!

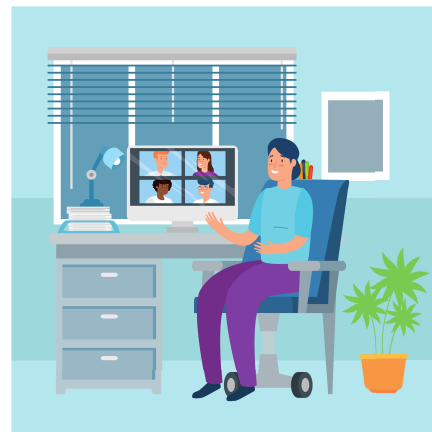
[Click here to submit your news for upcoming issues](#)



### A message from Associate Dean, Dr. Lara Delmolino Gatley

For staff members to whom this is applicable, FlexWork applications for approval to work on a remote or hybrid schedule (starting September 1st moving forward) **MUST** be submitted **by August 15th**. University policy and guidelines can be found [here](#).

All applications will be reviewed by the dean's office for approval, and must be submitted through the formal university system. Staff members are encouraged to speak to their supervisors with regard to any questions or specific requests. Thank you!



## CALLING ALL GSAPP STUDENTS!

### A Message from the RU-GSA President

Dear GSAPP Students,

My name is Shawn Rumrill. I am a 5th year PhD candidate in Chemistry and Chemical Biology with Dr. Eddy Arnold. I am also the President of the Graduate Student Association (GSA) at Rutgers.

The GSA oversees all graduate student organizations in New Brunswick/Piscataway, including allocation and management of funding. As such, we employ a part-time Business Manager. Historically, the GSA has always hired a GSAPP student. The role of the GSA Business Manager involves handling all matters regarding reimbursements, including reviewing documentation for approval, in addition to writing and sending checks to the corresponding GSA Officers.

We are looking for a new person to fill the role. Ideally, I would like to identify a candidate by the end of this month so that I can take some time to train them in August before students return to campus in the fall. Please let me know if you have any questions!

All my best,

Shawn Rumrill  
President@gsa.rutgers.edu  
Srr131@cabm.rutgers.edu



More information can be found here: <https://gsa.rutgers.edu/current-executive-officers/>.

## STUDENT SPOTLIGHT

### WE ARE SO PROUD!



The following GSAPP students successfully defended their dissertations:

- **Aliza Lasky Bier** defended "Therapist Experiences with Religion and Spirituality in Treatment: A Qualitative Study"
  - Advisors: Nicole Cain and Shalonda Kelly
- **Yoel Epstein** defended "Examining the Relationship between Self-Regulated Learning Content and Behavior Change in Function-Based Interventions"
  - Advisors: Adam Lekwa, Linda Reddy, and Timothy Cleary
- **Katharine El-Sharkaway** defended "Examining the Training Experiences, Future Aims and Beliefs of Medical Residents Regarding Patients in Larger Bodies"
  - Advisors: Kristen Riley and Terry Wilson



---

### CONGRATULATIONS, DBT-RU STUDENTS!

We are thrilled to announce that **Dr. Shireen Rizvi**, Director of the [Dialectical Behavior Therapy Clinic at Rutgers University \(DBT-RU\)](#) recently received some very good news. The NJPA Foundation Board of Trustees has approved giving the DBT-RU a 2022-2023 Community Service Grant in the amount of \$3,000!

The ten students below received a stipend of \$300 each:

**Joanne Kim**  
**Damilola Kolade**  
**Febrian Moten**  
**Kierra Pean**  
**Hannah Pucker**  
**Melanie Rosen**  
**Poojah Silamongkol**  
**Molly Stern**  
**April Yeager**  
**Qingqing Yin**



GSAPP has a long-standing history of involvement with the New Jersey Psychological Association (NJPA), often in leadership roles, including current President and GSAPP alum, **Dr. Peter DeNigris**. Its foundation is its philanthropic arm. The NJPAF's goal is to raise an additional \$200 per student stipend.

To make a donation, please click [here](#).

**[Click here to submit your news for upcoming issues](#)**

## MEDIA MENTIONS

GSAPP's esteemed faculty were once again featured in the mainstream media, graciously sharing their expertise on a variety of relevant topics. We are so proud of their impressive work and well-deserved representation of GSAPP!



If any Faculty member is interested in serving as a GSAPP media representative, please email: [marcom@gsapp.rutgers.edu](mailto:marcom@gsapp.rutgers.edu).

---

### DR. DIAZ-MARTINEZ FEATURED IN NJ SPOTLIGHT NEWS

Associate Teaching Professor and Director of Clinical Training, **Angelica Diaz-Martinez, PhD**, gave her insightful commentary in the *NJ Spotlight News* article, "Budget allocates \$9 million-plus to bolster ranks of NJ's mental health professionals." In the piece, Dr. Diaz-Martinez explains the need to bolster New Jersey's mental health professional network. Read the article [here!](#)



---

### DR. MOORE QUOTED IN NBC NEWS ARTICLE

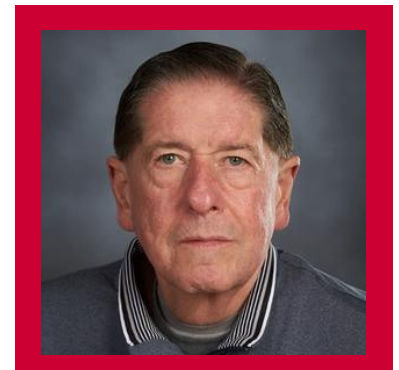


The Director of the Center for Psychological Services (CPS), **Kelly Moore, PhD**, provided expertise for the *NBC News* article, "Some young adults are swapping clubbing for crocheting. They call it their 'grandma era.'" Dr. Moore explains why this (post)pandemic trend may be occurring. Read the full article [here!](#)

---

### DR. MAYER'S OPINION PIECE APPEARS ON NJ.COM

Read sport and performance psychologist, **Charlie Maher, PsyD**'s, opinion article, "Sports psychologist: It takes a team to build a mentally fit sports organization," which appears on *NJ.com*. Charles Maher, PsyD, CMPC, FAASP, is a Professor Emeritus of psychology at GSAPP. View the article [here!](#)



[Click here to submit your news for upcoming issues](#)

## DRS. NADEEM & REDDY WEIGH IN ON DIFFICULT TOPIC

We are extremely grateful to our faculty for lending their expertise on this very difficult topic. "We do our best to minimize trauma in this most recent tragedy."

**Dr. Erum Nadeem** shared her expertise in the *Insider* article, "Playing dead and hiding: Traumatized children who survived Uvalde shooting recount horrors." Here, Dr. Nadeem offers tips for healing after these situations. Read the full article [here](#).

**Dr. Linda Reddy** shared her expertise in two *Newsweek* articles, "How to Talk to Your Child About Texas School Shooting—Psychologists Advise" and "Salvador Ramos' Expulsion Allowed 'Isolation and Disconnection' to Fester." Read both articles here: [First article](#), [Second article](#).

**Dr. Linda Reddy** also gave her insightful analysis in the *District Administration* article, "Why SEL is seen as one of the best tools for preventing school violence." She stated that "the social-emotional well-being of staff and students is a core prevention measure." Access the full article [here](#).



Erum Nadeem, PhD



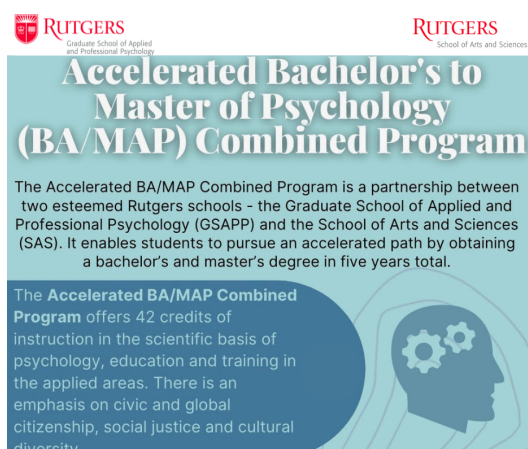
Linda Reddy, PhD

## PROGRAM HIGHLIGHT

### Accelerated Bachelor's to Master of Psychology (BA/MAP) Combined Program

The Accelerated BA/MAP Combined Program is a partnership between GSAPP and the School of Arts and Sciences (SAS). This program enables students to pursue an accelerated path by obtaining a bachelor's and master's degree in a total of five years.

For detailed information, please click [here](#).  
To apply, please click [here](#).

A flyer for the Accelerated Bachelor's to Master of Psychology (BA/MAP) Combined Program. It features the Rutgers logos at the top. The title is "Accelerated Bachelor's to Master of Psychology (BA/MAP) Combined Program". The text describes the partnership between the Graduate School of Applied and Professional Psychology (GSAPP) and the School of Arts and Sciences (SAS), enabling a five-year path. It also mentions 42 credits of instruction in psychology, education, and training, with an emphasis on civic and global citizenship, social justice, and cultural diversity. The flyer includes a graphic of a head profile with gears inside.

[Click here to submit your news for upcoming issues](#)



## CENTER NEWS & EVENTS

### From the Center of Alcohol & Substance Use Studies (CAS)

- Follow the CAS on Twitter, [@Rutgers\\_CAS](#) to keep up-to-date on current news and innovative research!
- Check out the CAS website for more information [here](#)!

---

### Meet the CAS Advisory Board

The Center of Alcohol & Substance Use Studies (CAS) values its Wellness in Recovery (WinR) community! This group vitally supports the supporters, the faculty, staff, clinicians, and students who, on a daily basis, study, serve, and effectively treat vulnerable populations, such as those in recovery, with sensitivity, dignity, and efficiency.



To read more about the WinR advisory board members - dedicated, experienced professionals who work independently and collectively hand in hand with the CAS to advocate for and serve the underserved, click [here](#)!

---

### From the Rutgers Center of Adult Autism Services (RCAAS)



- Check out the RCAAS on [Facebook](#) to stay up-to-date on upcoming events and news!
- Visit the RCAAS website for more information: <https://rcaas.rutgers.edu/>.

---

### RAA INTERVIEWS DR. MANENTE

Proud Scarlet Knight and three-time Rutgers alum, **Christopher Manente, PhD, BCBA**, was recently featured in a Rutgers Alumni Association (RAA) Spotlight! In the interview, Dr. Manente discusses his education and experience at Rutgers and how it led him to where he is today as the Executive Director of the RCAAS. Dr. Manente also defines and explains the distinct, yet collaborative units of the RCAAS and their impact on the community.



To view the interview, or read the transcribed text, please click [here](#).

**[Click here to submit your news for upcoming issues](#)**

## LATEST ISSUE OF ON THE SPECTRUM IN ADULthood IS OUT!



The latest issue of the #RCAASNewsletter, *On the Spectrum in Adulthood* (OTSIA), is out now! This edition focuses on a very relevant and important topic – Wellness and Well-being. From the voices of professionals, including those trained in mindfulness techniques, “Wellness and Well-Being” provides beneficial information and resources about mindfulness and effective ways to deal with stress in the workplace and in one's personal life.

The RCAAS extends a special thank-you to the OrgPsych Dept. for their collaboration on this issue!

Read the full edition [here](#). Subscribe to OTSIA [here](#). To view past issues, click [here](#).

## PUBLICATIONS

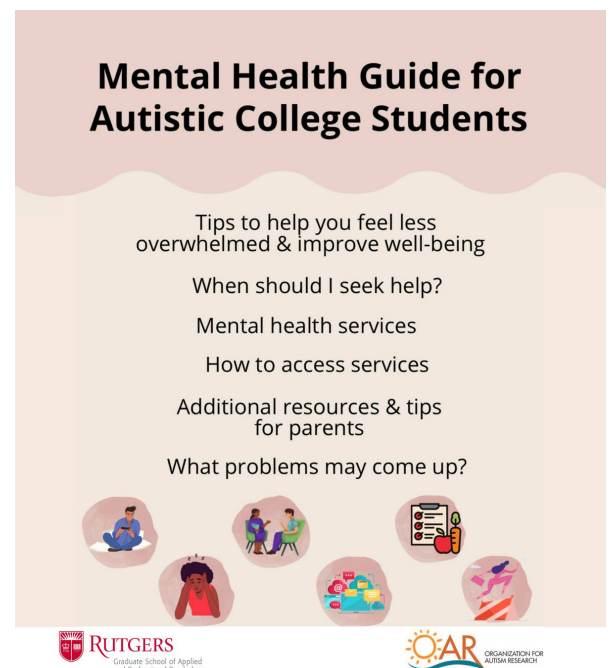
### NEW MENTAL HEALTH GUIDE FOR AUTISTIC COLLEGE STUDENTS

We are very excited to share the new *Mental Health Guide for Autistic College Students*!

This informative and helpful resource was created by a collaborative team headed by **Dr. Vanessa Bal**, Co-Director of Research, Director of the Lifespan ASD Lab and the RCAAS-Psychological Services Clinic (PSC), Karmazin and Lillard Chair in Adult Autism, and **Dr. Evan Kleiman**, Assistant Professor of Psychology at Rutgers University, as part of an Organization for Autism Research (OAR)-funded project, <https://researchautism.org>.

The team that created the guide was comprised of graduate students, staff, faculty, and clinicians, including several who identify as on the spectrum or neurodiverse. They compiled information from focus groups with autistic students in college and graduate school, some of their parents, and experiences gathered from a study with autistic students.

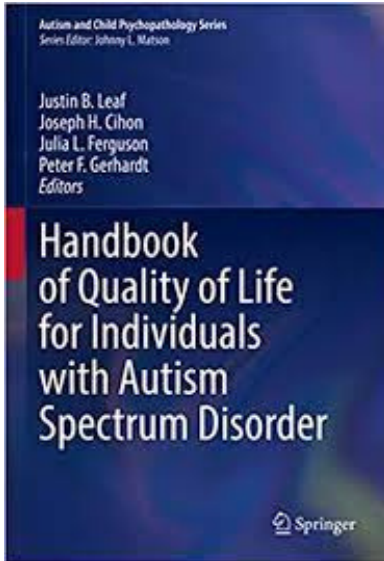
You can download the guide and read it in its entirety [here](#)!



[Click here to submit your news for upcoming issues](#)

## HANDBOOK OF QUALITY OF LIFE FOR INDIVIDUALS WITH ASD

Congratulations to RCAAS Relationship Coach, **Amy Gravino**, on co-authoring a chapter in the *Handbook of Quality of Life for Individuals with Autism Spectrum Disorder*! The chapter is titled, "Sexuality and Sexuality Education with Individuals with Autism: What You Should Know But Probably Don't."



According to Amy, "It addresses the complex subject of autism and sexuality education through both a clinical and personal lens. In this chapter, Dr. Gerhardt, Dr. Cauchi, and Ms. Gravino highlight the cultural and institutional barriers that professionals encounter in teaching sex education to autistic people, emphasize the need for greater research in the area of sexuality, and address the diverse needs of parents, autistic adults, and practitioners working in the field of autism."

Read the full chapter [here](#).

Hard copies are now available!

## SAVE THE DATE

### WELCOME BACK STUDENT PICNIC

Please join us as we kickoff the 2022-2023 academic year!

This highly-anticipated annual event for students, staff, and faculty will take place on **Wednesday, September 7th** from 12:00-1:30 pm in the Psychology Courtyard (152 Frelinghuysen Road, Piscataway).



### NATIONAL MAKE-A-WILL MONTH

#### ***A message from the RUF's Estate Planning & Gift Planning Office***

August is National Make-A-Will Month, which focuses on making a plan for the future. Estate planning ensures you can protect the people and causes you care about, including supporting future generations of students at Rutgers-GSAPP.

Join the many Rutgers alumni and friends who have used this service to create a **100% free** will, [here](#)!



**[Click here to submit your news for upcoming issues](#)**

## PROFESSIONAL DEVELOPMENT

# Discounts Available!

- GSAPP alum/supervisors/faculty: 20% off
- Rutgers alum: 10% off
- Current students (any university): 50% off
- GSAPP students: Free

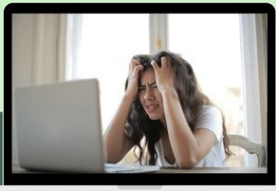
Please email [ce@gsapp.rutgers.edu](mailto:ce@gsapp.rutgers.edu) for discount codes.

Looking to earn your Continuing Education (CE) credits? GSAPP's Office of Professional Development and Continuing Education (OPDCE) strives to meet the training needs of professional psychologists and other behavioral health professionals through a variety of conveniently offered, on-demand and live webinars. Check out the featured webinars below! You can access the full library of offerings [here](#). For questions, please email [ce@gsapp.rutgers.edu](mailto:ce@gsapp.rutgers.edu).

## FEATURED ON-DEMAND WEBINARS

**On-Demand Webinar!**

Join us for "An Acceptance and Commitment Therapy Approach to Managing Stress For Children and Teenagers" w/ Dr. Erica Lander Miller



**1.5 CE credits for Psychologists (APA)**  
**1.5 CE credits for NY Psychologists (NYSED)**  
Price: \$30

**RUTGERS**  
Graduate School of Applied and Professional Psychology

**ON-DEMAND WEBINAR**



Using Games to Enhance Children's Motivation: Applications for Cognitive-Behavioral Therapy

**1 CE Credit**

**On-Demand Webinar!**

Join us for "Prescriptive Authority for Psychologists: A Paradigm Shift in Behavioral Health" w/ Dr. Derek C. Phillips



**3 CE credits for Psychologists (APA)**  
**3 CE credits for NY Psychologists (NYSED)**  
Price: \$60

**RUTGERS**  
Graduate School of Applied and Professional Psychology

**ON-DEMAND WEBINAR**



**A Delicate Balancing Act: Ethical Considerations When Using Applied Behavior Analysis (ABA)**

**1 CE Credit for Psychologists**  
**1 ETHICS CE Credit for BCBA/BCABA**

**RUTGERS**  
Graduate School of Applied and Professional Psychology

**CLICK HERE TO VIEW OUR ON-DEMAND WEBINAR LIBRARY**  
**USE PROMO CODE "EARLYBIRD" FOR A 10% DISCOUNT!**



**[Click here to submit your news for upcoming issues](#)**



## PROFESSIONAL DEVELOPMENT

### OPDCE'S UPCOMING LIVE WEBINARS

Get an early start on your fall learning! OPDCE will be featuring several live webinars that cover a variety of relevant topics. These courses can help you earn CE credits and are taught by renowned faculty and experts in their respective fields. Use promo code **"EARLYBIRD"** for a **10% discount!** Learn more about each webinar and register [here!](#)

#### Matching Vocational Aptitude & Employment Choice as Ethical Practice in Vocational Assessment for Adults with Autism Spectrum Disorder



Friday, September 16th  
1--3 pm ET

Instructor: James Maraventano, EdD, BCBA-D

2 CE credits

[Click here for more information](#)

#### Cognitive Aging, Alzheimer's Disease, and Dementia: Diagnosis, Treatment, Research Directions, and the Role of the Psychologist



Thursday, September 22nd  
12-1:30 pm ET

Instructor: Michelle Papka, PhD

1.5 CE credits

[Click here for more information](#)

#### Individual, Family, and School Interventions to Affirm and Support LGBTQ+ Children and Adolescents



Friday, September 23rd  
11:30 am-1:30 pm ET

Instructor: Judith Glassgold, PsyD

2 CE credits

[Click here for more information](#)

#### Resilience and the Black Experience



Thursday, September 29th  
12-1:30pm ET

Instructor: Monique Swift, PsyD, LPC

1.5 CE credits

[Click here for more information](#)

[Click here to submit your news for upcoming issues](#)

## GAZETTE STAFF

Jessica Febo, Marketing Communications Intern  
Kim Spinelli, Director of Communications

## CONTRIBUTORS FOR THIS EDITION (THANK YOU!)

Vanessa Bal  
Jessica Benas  
Lara Delmolino Gatley  
Brielle Iannaco  
Ryan Kettler  
Sylvia Krieger  
Charlie Maher  
Erum Nadeem  
Leela Prendergast  
Linda Reddy  
Megan Schumann  
Peggy Swarbrick

## PREVIOUS ISSUES

[May/June](#)  
[April 29](#)  
[March 31](#)

*"In summer, the song sings  
itself."*

-William Carlos Williams

## FOLLOW GSAPP ON SOCIAL!



[Click here to submit your news for upcoming issues](#)