



How to operate the telepresence equipment for presentations and meetings

HDMI

1. Touch the panel to start



2. Connect one end the HDMI cable provided to you by GSAPP to your laptop

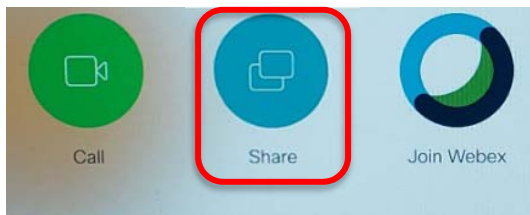


3. Connect the other end on the wall plate to one of the HDMI connections

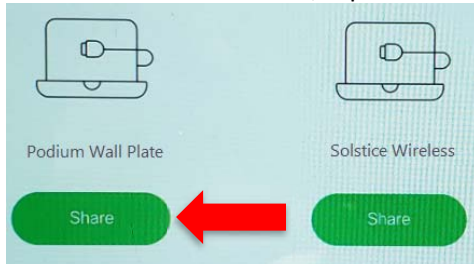


4. Tap on Share (Blue button)

Note: The system has an auto-detect feature so it might automatically display your desktop on the TV screen once connected.



5. Under **Podium Wall Plate**, tap on Share (Green button)





6. Your desktop will now show on the TV screen



7. Disconnect the HDMI cable from both your laptop and from the wall plate once finished



If you need further assistance, please contact GSAPP-IT:

Lucas Dalenberg
5-3981, 848-445-3981

Lucas.dalenberg@rutgers.edu

Nirmal Sadarangani
5-3911, 848-445-3911

sadarani@gsapp.rutgers.edu